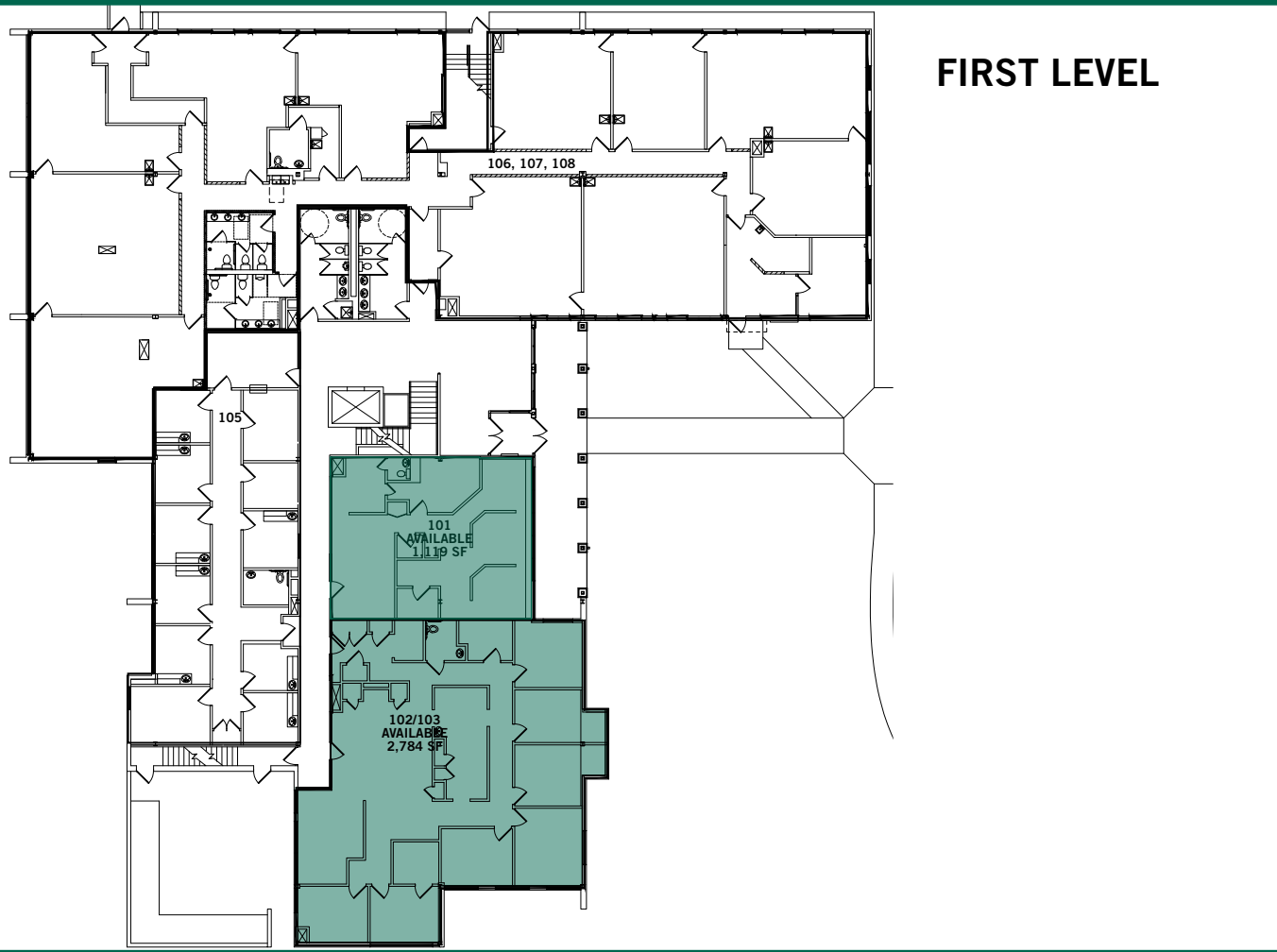


# Spring House Medical Building | 909 Sumneytown Pike, Spring House, PA



FIRST LEVEL

## BUILDING DETAILS

### Property Overview

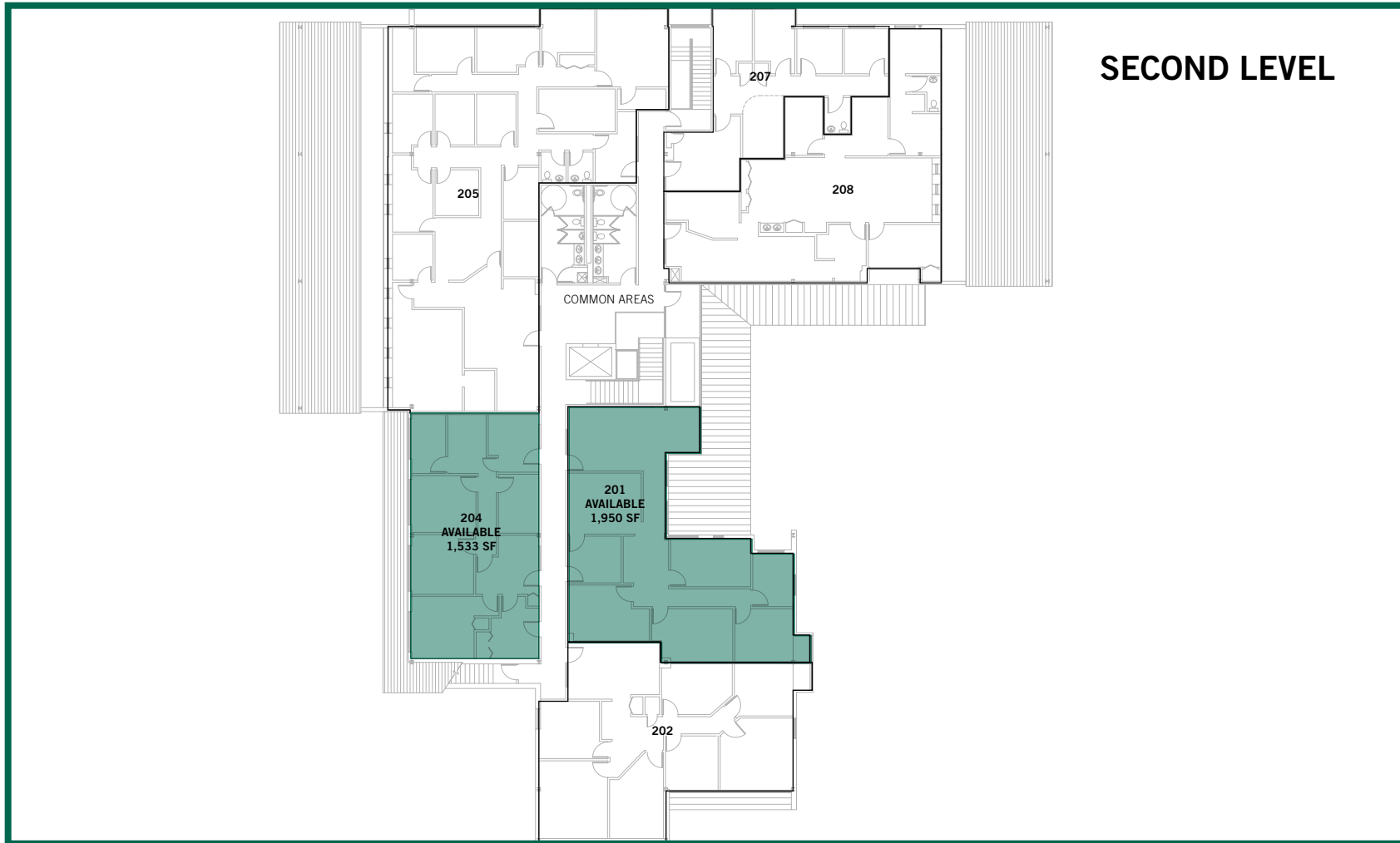
<b>Total GLA</b>	25,256 sq. ft.
<b>Stories</b>	2
<b>Parking</b>	86

### Space Available

<b>Suite 101</b>	1,119 sq. ft.
<b>Suite 102/103</b>	2,784 sq. ft.
<b>Suite 201</b>	1,950 sq. ft.
<b>Suite 204</b>	1,533 sq. ft.

- Leased
- Vacant

# Spring House Medical Building | 909 Sumneytown Pike, Spring House, PA



## BUILDING DETAILS

### Property Overview

<b>Total GLA</b>	25,256 sq. ft.
<b>Stories</b>	2
<b>Parking</b>	86

### Space Available

<b>Suite 101</b>	1,119 sq. ft.
<b>Suite 102/103</b>	2,784 sq. ft.
<b>Suite 201</b>	1,950 sq. ft.
<b>Suite 204</b>	1,533 sq. ft.

- Leased
- Vacant